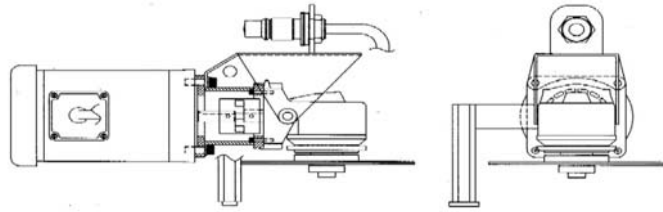


West Metal Works, Inc. Remote Tools

Adamant Steel Cutting Saw

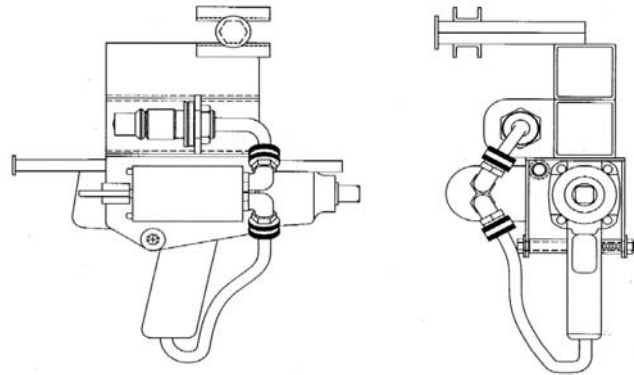
- Dual opposing blades
- Blades must be ordered separately.
- Electrical connector must be specified at time of order.



Model No.	Power	Motor Phase	Motor	Blade Size	Net Wt. (lbs)
WMW2739	1/2 HP	3	230/460	9"	23

3/4" Impact Wrench

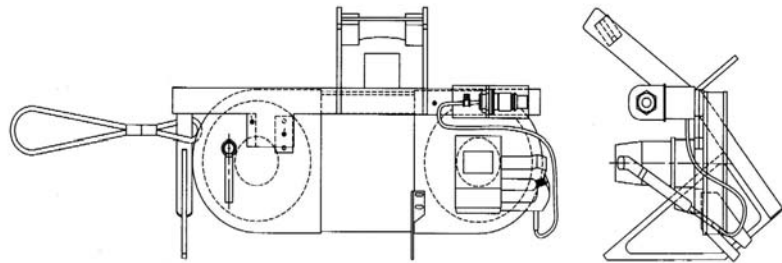
- Reversible drum switch.
- Impact sockets must be ordered separately.
- Electrical connector must be specified at time of order.



Model No.	Torque (ft-lbs)	Motor	Motor Amps	No Load Speed	Net Wt. (lbs)
WMW907520	40-375	120VAC	7	1,500	12

Deep Throat Band Saw

- Variable speed.
- Capacity 7-1/4" round or 7-1/4 x 7-1/2" rectangular.
- Electrical connector must be specified at time of order.

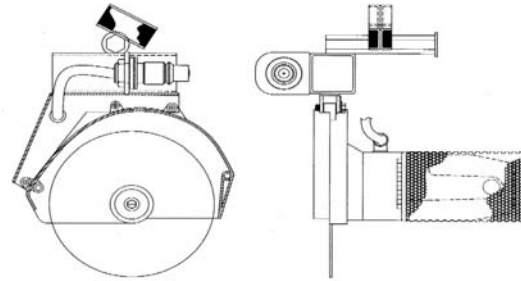


Model No.	Motor	Motor Amps	Speed (sfpm)	Band Length	Net Wt. (lbs)
WMW 560470010	120VAC	6	120-245	28-3/4"	15

West Metal Works, Inc. Remote Tools

7" Steel Cutting Circular Saw

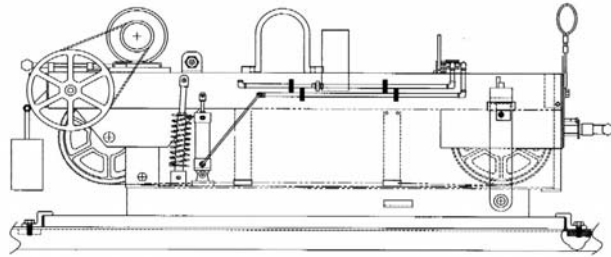
- 1200-watt motor.
- Depth of cut 2-3/8".
- Thickness 1/4" plate.
- Blades must be ordered separately.
- Electrical connector must be specified at time of order.



Model No.	Power	Motor Amps	Speed (rpm)	Blade Size	Net Wt. (lbs)
WMW180	120VAC	15	5,800	7"	12

Do-All Band Saw

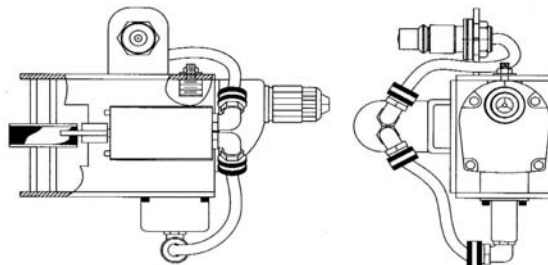
- Variable Band speed.
- Cutting cap. 9" high x 16" wide.
- Blade changing tool included with saw.
- Blades must be ordered separately.
- Electrical connector must be specified at time of order.



Model No.	Power	Motor	Speed (rpm)	Band Length	Net Wt. (lbs)
WMWC916M	2 HP	115/230-V	1,800	158"	750

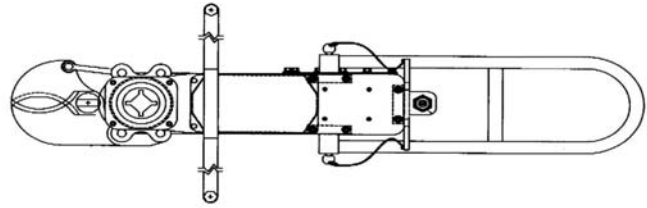
1/2" Drill Motor

- Heavy-duty hand chuck.
- 5/8" spindle.
- Electrical connector must be specified at time of order.



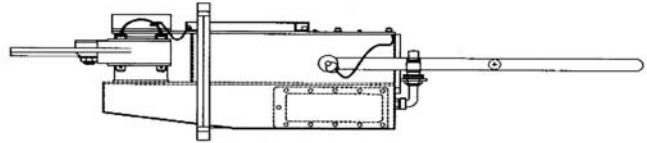
Model No.	Gear Reduction	Motor Amps	No Load Speed	Chuck Size	Net Wt. (lbs)
WMWDW131	Triple	7	450	1/2"	13

West Metal Works, Inc. Remote Tools

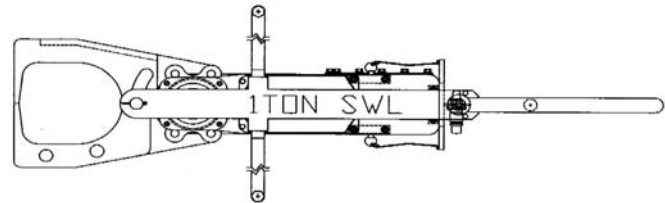


Power Shear

- Shear tubing, cable, etc.
- Electrical connector must be specified at time of order.

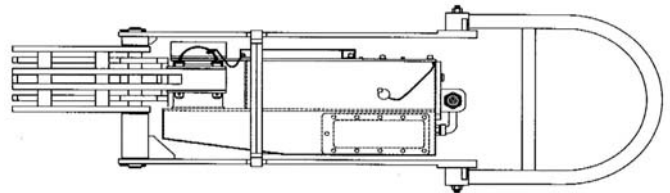


Model No.	Power	Speed Control	Capacity Dia. (inch)	Capacity Wall (inch)	Net Wt. (lbs)
WMW001	460V	Variable	1/1/2002	0.06	115

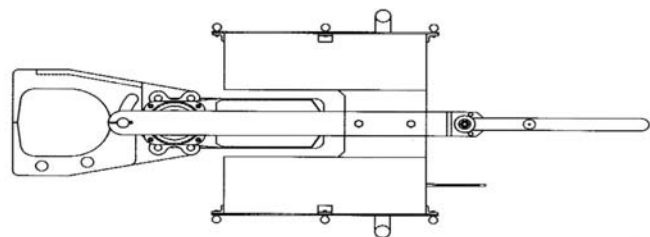


Power Grabber

- 2000-pound safe working load.
- Electrical connector must be specified at time of order.

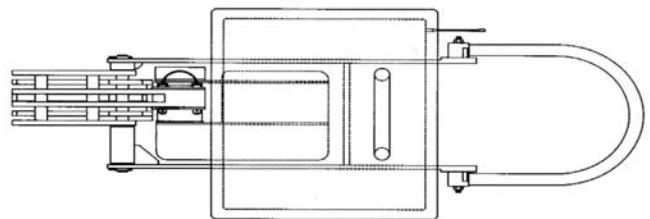


Model No.	Power	Jaw Cap. Open (inch)	Jaw Min. Open (inch)	Safe Working Load (lbs)	Net Wt. (lbs)
WMW002	460V	7/1/2004	2	2,000	225



Remote Controlled Power Grabber

- Unit controlled by remote.
- Unit powered by rechargeable power pack.
- Electrical connector must be specified at time of order.

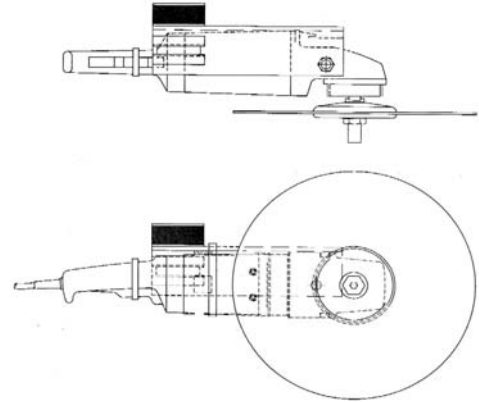


Model No.	Power	Jaw Cap. Open (inch)	Jaw Min. Open (inch)	Safe Working Load (lbs)	Net Wt. (lbs)
WMW003	Battery	7/1/2004	2	2,000	725

West Metal Works, Inc. Remote Tools

Abrasive Cut-off Machine

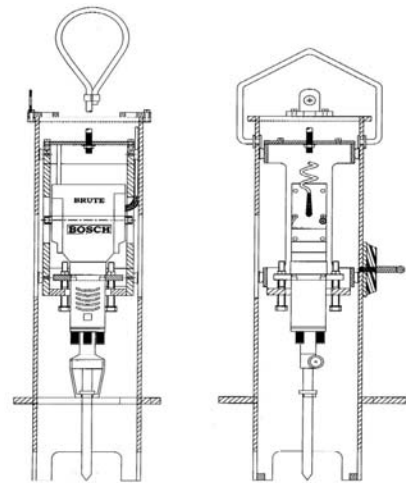
- Uses abrasive cutting wheels.
- Blade retining nut modified for remote wheel changes.
- Electrical connector must be specified at time of order.



Model No.	Motor	No Load RPM	Motor HP(max.)	Wheel Size(inch)	Net Wt. (lbs)
WMW1365	15 Amp	4,300	4.7	14	32

Demolition Hammer

- Electric breaker hammer.
- Hex tool steels must be ordered seperately.
- Accepts standard 1-1/8" hex air tool steel with retaining collar.
- Electrical connector must be specified at time of order.



Model No.	Impact energy (ft-lbs)	Motor	Motor Amps	Tool Steel	Net Wt. (lbs)
WMW11304	43	120VAC	15	1-1/8" Hex	150

* Tools shown with "gripper" channels for use with PAR3000 manipulator, when placing order, please specify gripping/holding requirements.

* When placing order please specify electrical connector to be used and special blade/tooling requirements

* Please feel free to contact West Metal Works, Inc. engineering staff with any questions you may have.

ORDER FORM

Company name: _____

Date: _____

Ship to address: _____

Phone #: _____

Fax #: _____

Bill to address: _____

Contact name: _____

P.O. Number: _____

Req'd date: _____

Special notes: _____

Item	Model No.	Description	Qty.	Electrical Conn.	Accessories (blades, sockets, etc)	Qty.
1						
2						
3						
4						
5						
6						
7						
8						
9						
10						
11						
12						
13						
14						
15						